

# lunchtime?



Flying insects are known to carry **millions** of disease-causing organisms and have been implicated as carriers of *Listeria*, *Salmonella* and *E.coli*!

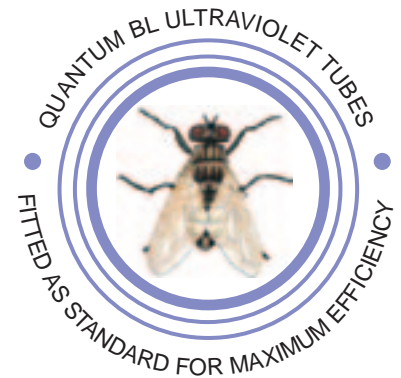
**Chameleon Flytraps**  
they make sure you're not  
getting more than you ordered!



# The Chameleon catches the small flies the others leave behind!



Changes in pest control practices, towards the use of more target specific products such as gels and baits, has allowed the population of some types of pest flies to increase. The main insects that are becoming a nuisance are the smaller sized ones, fruit, drain and fungus flies. These small sized insects are better controlled by the Chameleon line of sticky units.



- Effective fly protection at an affordable price.
- Silent, hygienic and attractive.
- Reflectobakt® sleeves give longer board life.
- Insects, both large and small, are caught intact for easy identification.
- Black boards for added discretion, as insects remain unseen.
- Chameleon units use interchangeable tubes and adhesive boards.
- Quantum BL UV tubes for maximum attraction and extra efficiency - 100% more powerful, 40% more effective.
- Durable construction for extra long life and easy cleaning.
- Quick and easy no-tool service.



Flies can not eat solid food, so to soften it up, they vomit on it. Then they stamp in the vomit to form a liquid, adding a few germs for good measure. After this they suck it all back up again, dropping some excrement at the same time.

**And then when they've finished eating - it's your turn!**

## The Chameleon Line

### Chameleon™ 1x2

Attractive, ultra-slim, wall-mounted unit (free-standing bracket available), compact and unobtrusive, ideal for use in food preparation areas.

- Large full-size sticky board to effectively catch even the smallest flies.
- 2 x 15-watt powerful Quantum BL tubes give 180° coverage up to 90m<sup>2</sup>.
- Revolutionary Reflectobakt® (Pat.App.) sleeves allow longer board life and slimmer design.
- Removable bottom tray and drop-down guard.
- White powder-coated Zintec steel or brushed stainless steel for long life durability and easy cleaning.

**Dimensions: H x W x D = 31.5 x 48.5 x 6.5 cm**

**Weight: 4.3 kg.**



### Chameleon™ 2x2

Ceiling-suspended; able to protect large open areas. Can be placed above aisleyways with no possibility of fly fallout.

- Double-sided 360° attraction with 4 x 15-watt Quantum BL tubes and 2 full-size sticky boards for coverage up to 180m<sup>2</sup>.
- Revolutionary Reflectobakt® sleeves.
- Removable bottom tray and drop-down guard.
- White powder-coated Zintec steel or brushed stainless steel for long life durability and easy cleaning.

**Dimensions: H x W x D = 31.5 x 48.5 x 12.5 cm**

**Weight: 6 kg.**



### Chameleon™ Uplight

Attractive, wall-mounted unit; the perfect choice for areas where fly control should be discreet, e.g. eating areas.

- Disguised as a wall light.
- Full-sized sticky board and 15-watt Quantum BL tubes hidden from view, give coverage up to 40m<sup>2</sup>.
- Cover drops down for no-tool, quick and easy service.
- Magnolia powder-coated Zintec steel for easy cleaning.
- Front cover can be decorated to match existing décor i.e. painted or wallpapered.

**Dimensions: H x W x D = 21 x 47 x 17 cm**

**Weight: 3.7 kg.**



**All Chameleon units are EXCLUSIVELY fitted with Quantum BL tubes for maximum attraction and extra efficiency.**

**All Chameleon units carry a 3-year guarantee (excluding tubes and starters).**

Exciting interactive web site for up to the minute advice and information on all aspects of flying insect control, visit: [www.pestwest.com](http://www.pestwest.com)



HOUSEFLY



*Musca domestica*

FRUIT FLIES



*Drosophila* spp.

WASPS



*Vespula* spp.

MOSQUITOES



*Culex* spp.

- Unit Selection.
- Technical Advice.
- Surveying Premises.
- Training Services.
- Fly Identification.



Cert: 8522



Distributed by:

PestWest Electronics Limited is part of the Killgerm Group of companies.